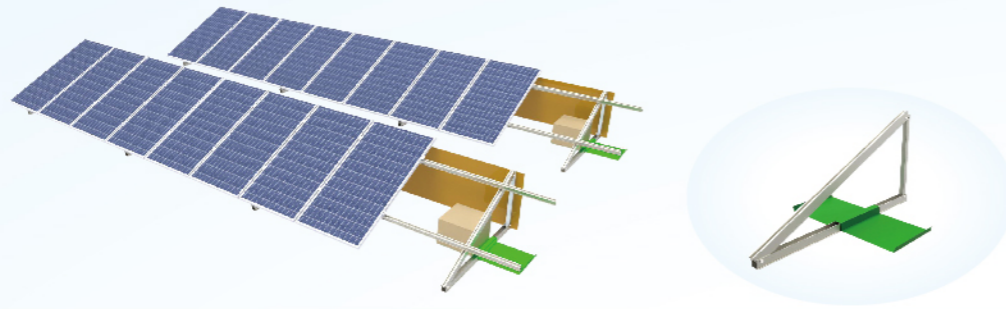


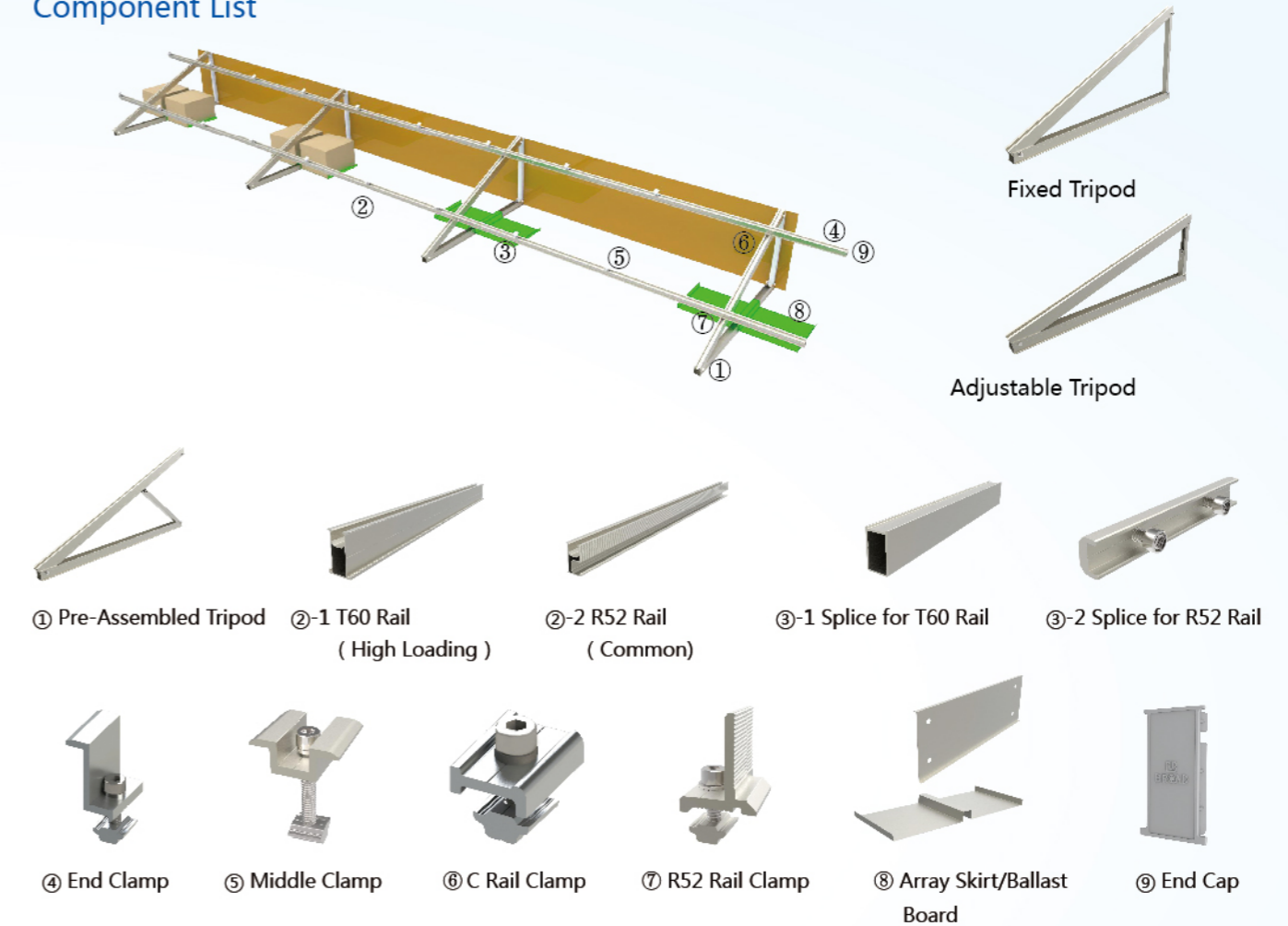
## Tripod Mounting System



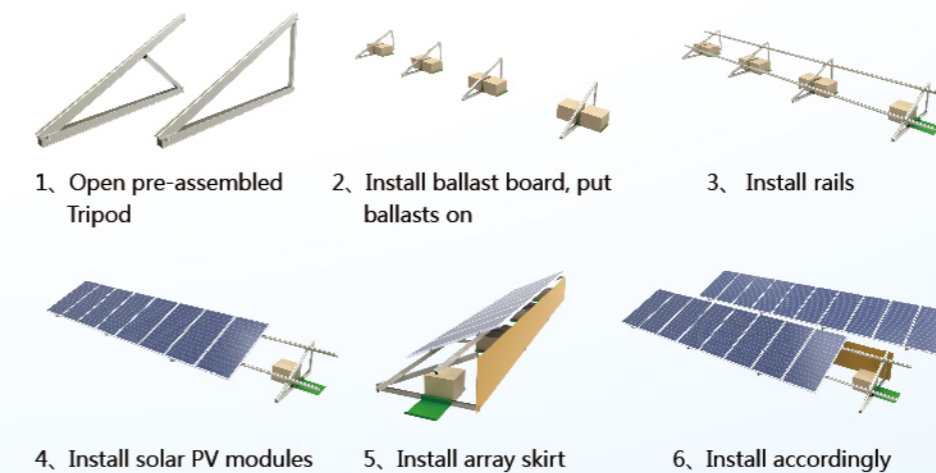
BROAD Tripod mounting system is suitable for various Residential and industrial roofs. The tilt angle can be fixed or adjusted. Its pre-assembled support component enables to save your time and money.

Installation Condition			
Installation Site	Flat Roof / Open Area	Foundation	Ballasted / Concrete Base
Max. Wind Loading	60 m/s	Max. Snow Loading	1.65 KN/m²
Tilt Angle	0° ~ 60° / Adjustable	Module Orientation	Landscape / Portrait
Design Standard	JIS C 8955 : 2011		
	AS / NZS 1170		
	DIN1055		
	International Building Code: IBC 2009		
	California Building Code: CBC 2010		
Component Detail			
Component List	Component Material		
Pre-Assembled Tripod	AL6005-T5 ( Surface : Anodized,Thickness of Oxide Film ≥ 10μm )		
T Rail			
Splice for T Rail			
End Clamp			
Middle Clamp			
C Rail Clamp			
R52 Rail Clamp			
Array Skirt/Tripod Ballast Board	SUS304		
Fastener			
Feature			
Easy installation	Efficient pre-assembled structure design,ballasted installation.		
High compatibility	Compatible with most of the frame and frameless PV modules in the market.		
Quality assurance	10 years guarantee,25 years service life.		

## Component List



## Installation Guide



## Different Shapes

